



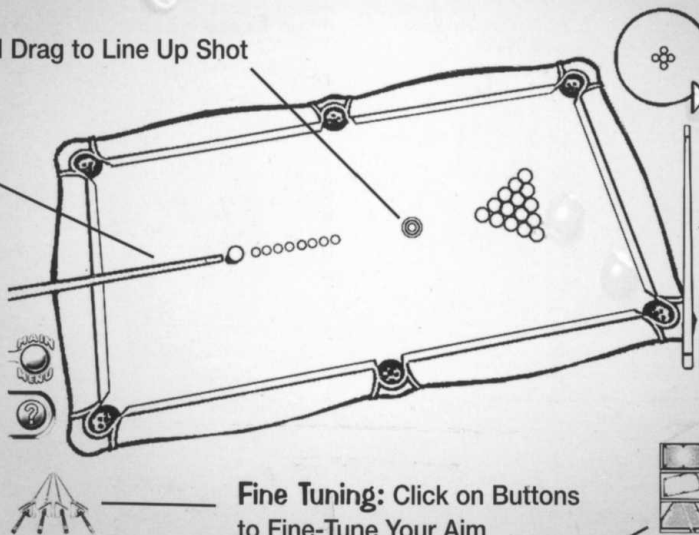
QUICK REFERENCE CARD

Target Ball: Click and Drag to Line Up Shot

Cue Stick: Click and Drag to Line Up Shot

Main Menu: Click to Exit Game

?: Click For Game Options and Help, Such As Viewing Game Rules, Resigning, and Passing Your Turn



Ball English: Click and Drag Cross Hairs to Set Strike Point and Apply English

Shot Stick: Click, Pull Back, and Then Release Mouse Button or Push Forward to Shoot

Top Down View: Click to View Table From Above

Angled View: Click to View Table From the Side

Shooter's View: Click to View Table From Over the Cue Stick

SIERRA™
attractions

© Sierra On-Line, Inc. 1999. All rights reserved.
Printed in the USA. 7073120



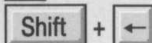
KEYBOARD SHORTCUTS

PREPARING TO SHOOT

Move Cue Stick Clockwise



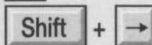
Move Cue Stick Clockwise Quickly



Move Cue Stick Counter-Clockwise



Move Cue Stick Counter-Clockwise Quickly



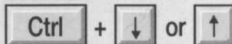
Select a Ball in Basic Pocket Billiards



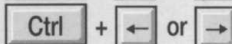
Select a Pocket in Eight Ball



Set Draw or Follow English



Set Left or Right English



SHOOTING

Pull Back Cue Stick to Increase Shot Strength



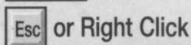
Move Cue Stick Forward to Lessen Shot Strength



Hit Cue Ball After Setting Shot Strength

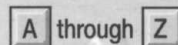


Cancel Shot



ONLINE CHAT

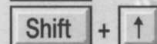
Open Chat Box and Type Message



Send Message



Scroll Back Through Previous Messages



Scroll Forward Through Previous Messages



MISCELLANEOUS

Display Help Menu



Fast Forward to End of Shot



Quit Game and Return to Main Menu



"CHEAT" KEYS (NOT ACTIVE DURING ONLINE GAMES)

Undo Shot



Redo Shot



Instant Replay



Re-Rack Balls

